

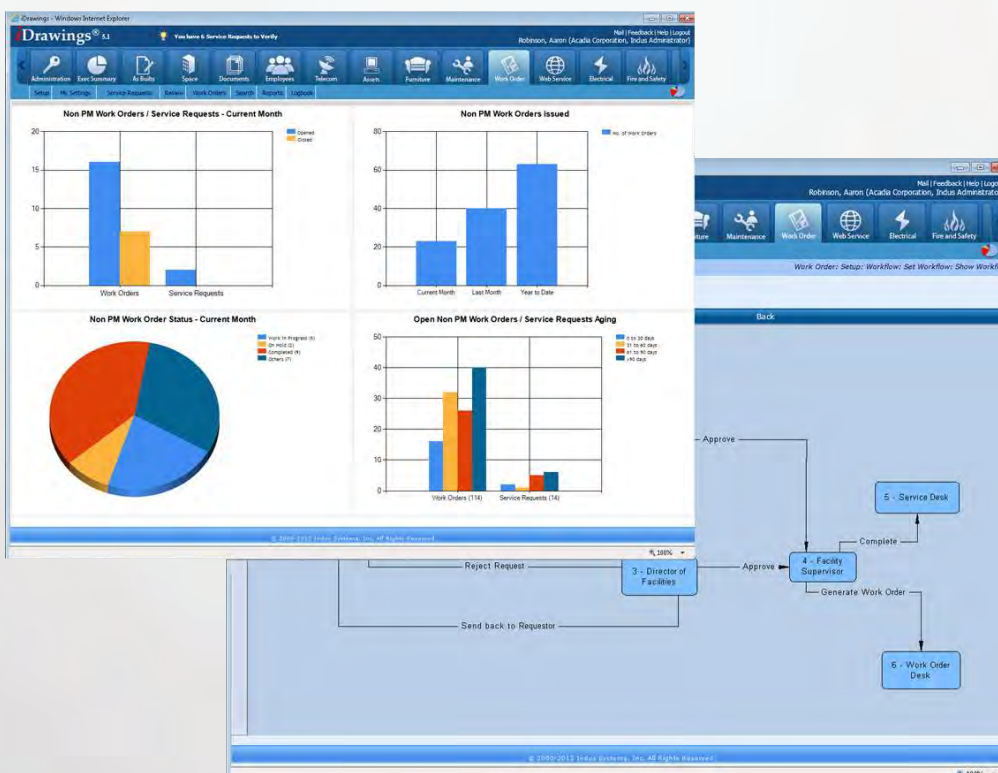
- Integrated Work Management Solution
- Manage Resource Allocation
- Reengineer Business Processes to Optimize Workflows
- Simplify Cost Management and Charge-backs

Enterprise-wide web-based service solution

providing the flexibility to manage a broad spectrum of business processes.

Are you inundated with numerous on-demand service requests without having an organized and manageable system? Is it easy for your users to enter requests for service and track their progress online?

The iDrawings® Work Order Module answers these challenges and more. It is a user-centric solution that allows an extensive cross-section of employees and contractors to collaborate on work requirements through an easy to use browser based interface.



Value Proposition

- **Optimizes The Workflow**
Effortlessly manage workflow with a standardized method that supports compliance guidelines.
- **Enhances Productivity**
Successfully improve service responsiveness and execution.
- **Minimizes Costs**
Accurately budget and forecast costs; track and schedule labor hours for work orders and chargeback to specific departments.
- **Utilizes iDrawings®... On The Go**
Seamlessly operate the Work Order Module “anytime anywhere” through mobile devices i.e. tablet and/or smart phone.
- **Boosts Responsiveness**
Quickly provide request capture and real-time status updates for users.

Integrated Workflow Management Solution

Work Order Management System

Defines standardized business processes specific to your facility. Interfaces to the *iDrawings*® Preventive Maintenance Module. Allows users to enter non-PM service requests easily. Manages work orders for both PM and users' request based on customized workflows. *iDrawings*® Work Order Module provides an efficient mechanism to automate all the steps of a service request from request, approval, work order issue, costing, chargeback, completion, closing, and feedback.

Integrated Facility Database

Integrated functional databases provide a holistic view of assets, engineering documents, and available resources to meet work requirements. Links all pertinent information; historical data, current requests, and future estimates, providing a pro-active work management environment.

Service Requests

iDrawings® Work Order Module provides an easy-to-use web based interface for users to submit requests for services. The interface brings the software directly to end users eliminating delay and lost requests. The requester can track the status of the request at any point.

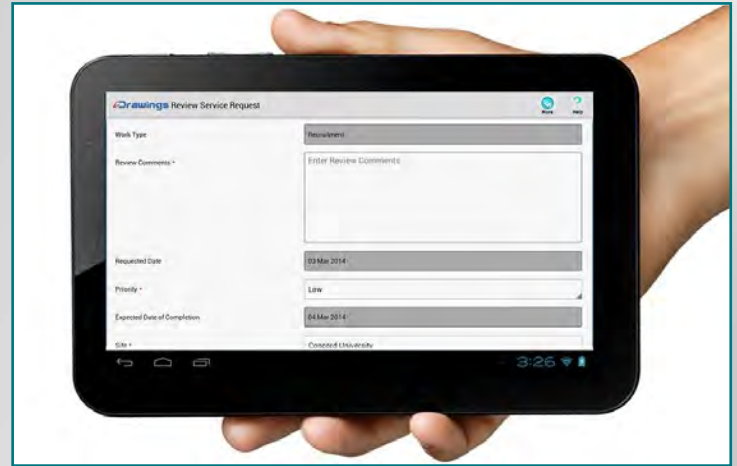
Workflow

Workflows reflecting corporate business processes can be integrated with specific work types. The web-centered system design allows real time monitoring from anywhere on the Web. This provides the ability to receive requests, determine scope and urgency, assign priority and schedule orders, and assign shop and trades required using the desktop or mobile platforms.

Mobile Operations

Facilities Gone Mobile

Indus Systems has made it easy to oversee operations in your organization while on-the-go. Facilities managers on the move have access to all data needed pertaining to any work order, can review requests, and make



decisions. Any changes made on the smart device can be synchronized to the desktop computer and updated.

Cost Allocation

Cost and Chargeback

Manage and track cost breakdown, chargeback to departments, and easily export data to corporate systems. *iDrawings*® Work Order Module maintains labor cost data related to individual employees and contractors. Cost data for specific system, sub-systems and components enable the system to create the total cost estimates and actuals for completed work requests.

Key Business Metrics

Reporting

The Work Order Module includes a powerful and extensive set of reports that provide a complete view of your facility maintenance management. Use the historic data to facilitate analyses and trends. Share the reports easily with your colleagues and management for quick decision-making.



2352 Main Street, Concord, MA 01742
Tel: 978-461-0555, Fax: 978-461-0649
Email: indus@indus-systems.com
www.indus-systems.com



**INDUS
SYSTEMS, INC.**